

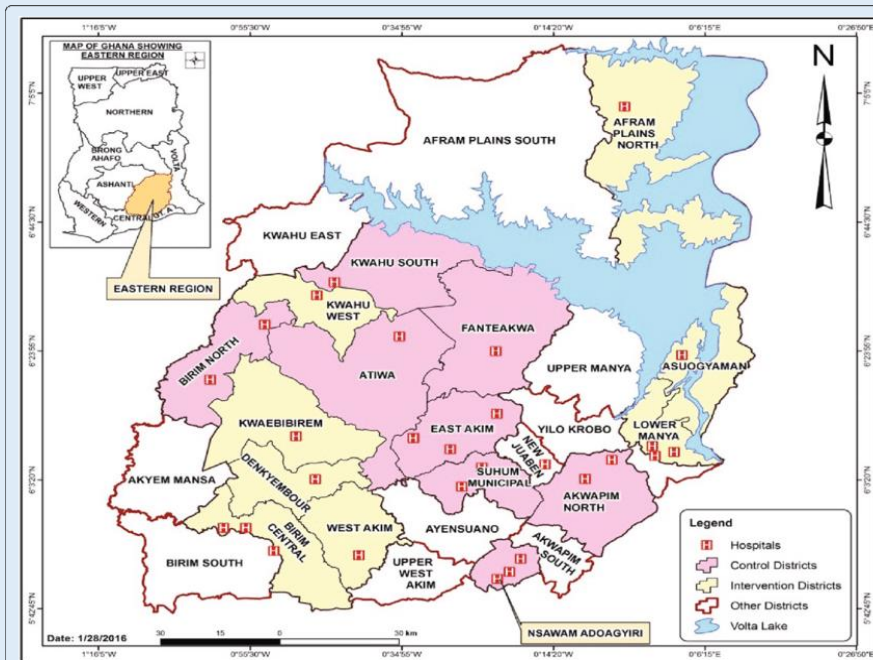
**Quick Update: 14 Confirmed Dead and over 50 Injured in a Gory Accident**

**Location: Kyekyewere in the Eastern Region**

**Date: September 15, 2020**

## BACKGROUND/ DEMOGRAPHY

Map of Eastern Region



- ✓ Name of town Kyekyewere
- ✓ District Ayensuano District
- ✓ Region Eastern Region
- ✓ The Accra-Kumasi highway is a hotspot for accidents due to the poor nature of some parts the road and the absence of street lighting, especially at night.
- ✓ Major transport operators use this route to connect to the northern parts of the country - Tamale, Wa, Techiman, Kintampo and Bolga.

Source: [https://www.researchgate.net/profile/Kerstin\\_Klipstein-Grobusch/publication/315795654/figure/fig1/AS:479992699199488@1491450585162/Map-of-districts-in-the-Eastern-Region-of-Ghana-The-districts-were-defined-as-cluster.png](https://www.researchgate.net/profile/Kerstin_Klipstein-Grobusch/publication/315795654/figure/fig1/AS:479992699199488@1491450585162/Map-of-districts-in-the-Eastern-Region-of-Ghana-The-districts-were-defined-as-cluster.png)

## INCIDENT PROFILE

There was an accident on the Kyekyewere road near Suhum on the Accra-Kumasi road involving a State Transport Company (STC) bus, a cargo truck, and another bus. The accident is reported to have occurred on Tuesday September 15, 2020 at dawn. According to eyewitnesses, the cargo truck veered off its lane after a tyre burst, forcing the other vehicles to run into it. The driver of the STC bus, upon sensing danger applied his brakes and veered off into a nearby gutter. However, the other bus driver, who was behind the STC bus, did not see what was happening ahead of him on time, thus crashed into the trailer.

Onlookers could not immediately intervene because of the nature of the accident. An ambulance was quickly called in to help rescue the affected passengers. Initially, about ten persons died on the spot while over 50 persons were deemed injured. Four persons were later confirmed dead after the accident. Two persons died from the STC bus while the other twelve died from the other bus.

Personnel from the Ghana Police Service and the National Disaster Management Organisation (NADMO) were also called to the scene to help control the situation. The victims involved in the accident have been sent to the Nsawam and Suhum Government Hospitals for treatment. The dead bodies have also been conveyed to the morgue.

## RISKS ANALYSIS:

Road accidents constitute a major cause of death in Ghana. Indeed, road traffic accidents and its accompanying deaths have become a growing public health concern, as a number of



# NEWS Quick Updates

Website: [www.wanep.org](http://www.wanep.org) / [www.wanepghana.org](http://www.wanepghana.org) ||

Email: [info@wanepghana.org](mailto:info@wanepghana.org) / [news@wanepghana.org](mailto:news@wanepghana.org) || Phone: +233 (0)0372098747

victims have sustained varied degrees of injuries that have caused physical disabilities. Already, hospitals are saddled with the COVID-19 pandemic and the challenges with protection and safety precautions. Given this, the magnitude of the accident has potential to increase pressure on healthcare facilities in the affected area of the incident.

## **MECHANISMS FOR INTERVENTIONS:**

- Personnel from the Ghana Police Service and The National Disaster Management Organization and the Ambulance Service were on the scene to provide humanitarian response to the affected victims.
- The injured persons were taken to the Nsawam and the Suhum Government Hospitals for treatment.
- The mutilated bodies of dead passengers have been conveyed to the Nsawam and Suhum Government Hospitals morgues.
- The Police have cleared the accidents scene to allow traffic to commence.

## **RECOMMENDATIONS:**

### **Short Term**

- This unfortunate incident calls for a humanitarian approach to assisting affected victims and their families. The Government as well as other Civil Society Organizations could support victims with hospital and general welfare costs.
- The accident scene should be cleared of debris to allow for traffic flow.
- Victims who survived the accident may experience some level of Post-Traumatic Stress Disorder (PTSD). Therapy and Counseling sessions should be prescribed and made accessible at the healthcare facilities they are being treated in.

### **Long term**

- Inter-city transport companies including STC, VVIP, VIP, Metro Mass Transport, and OA, should implement policies on speed limits, and co-driving while the Ghana Highways Authority should improve upon the visibility of the road signs especially during the reason season to help curb road accidents.
- The regulations on weight of cargo, and a strong licensing regime by both the MTU and the Drivers and Vehicle Licensing Authority (DVLA) need to be strictly enforced to reduce the risks of accidents on the roads, especially those caused by poorly maintained vehicles..

## **References:**

1. <https://www.graphic.com.gh/news/general-news/14-dead-in-accident-at-kyekyewere.html>
2. <https://www.myjoyonline.com/news/national/14-dead-over-50-others-injured-in-gory-accident-at-kyekyewere/>
3. <https://www.ghanaweb.com/GhanaHomePage/NewsArchive/10-dead-over-80-injured-as-cargo-truck-crashes-into-two-buses-at-Kyekyewere-1059862>
4. <https://www.ghanaweb.com/GhanaHomePage/NewsArchive/Two-drivers-involved-in-Kyekyewere-road-accident-missing-1060549>



# NEWS Quick Updates

Website: [www.wanep.org](http://www.wanep.org) / [www.wanepghana.org](http://www.wanepghana.org) ||

Email: [info@wanepghana.org](mailto:info@wanepghana.org) / [news@wanepghana.org](mailto:news@wanepghana.org) || Phone: +233 (0)0372098747

For further information, kindly contact Albert Yelyang, National Network Coordinator through [ayelyang@wanepghana.org](mailto:ayelyang@wanepghana.org)